



TK International
020 7794 8700
www.t-k.co.uk

Residential Sales
Residential Lettings
Property Management

Sales Office:
9 Heath Street
Hampstead
London NW3 6TP
E: sales@t-k.co.uk

Lettings Office:
16-18 Heath Street
Hampstead
London NW3 6TE
E: lettings@t-k.co.uk

tk.international
TK International
TK International

Est.
1998



Maresfield Gardens Hampstead NW3

An outstanding recently renovated ground floor four bedroom apartment, situated in this popular tree-lined road.

The accommodation boasts a 17' master bedroom with en suite bathroom, three further double bedrooms, en suite shower room and a family bathroom. The flat also enjoys a 32' reception room with fully equipped kitchen and access to a beautiful private west facing 70' rear garden.

Includes an array of features such as air conditioning, under floor heating and off-street parking.

Maresfield Gardens is located approximately 0.5 mile from the wide choice of shops, restaurants and cafes in Hampstead Village (Northern Line) and Finchley Road (Jubilee & Metropolitan Lines).

£15,000 Per Month

SOLE AGENT













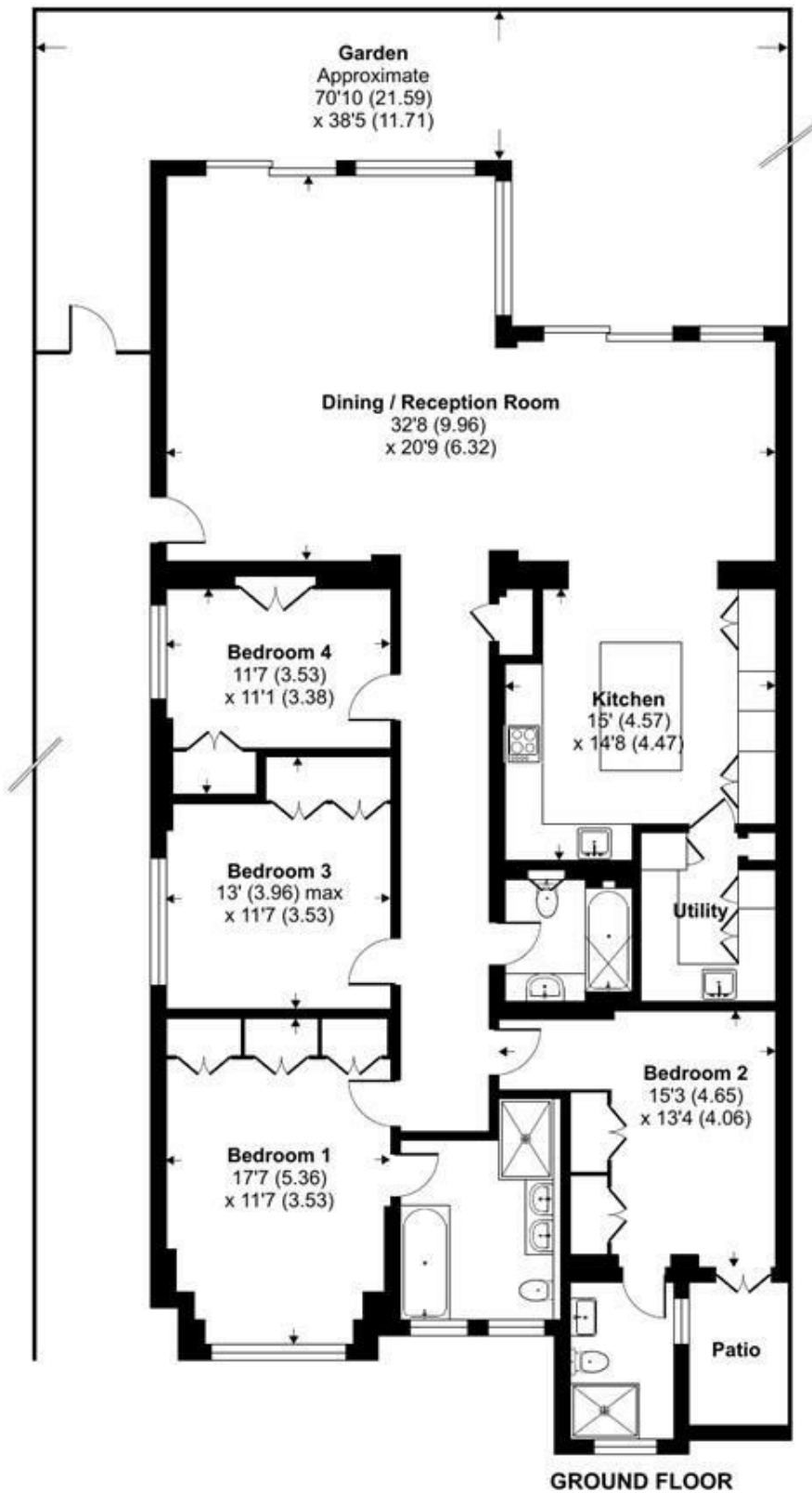




Maresfield Gardens, London, NW3

Approximate Area = 1920 sq ft / 178.3 sq m

For identification only - Not to scale



Certified
Property
Measurer

Floor plan produced in accordance with RICS Property Measurement Standards incorporating International Property Measurement Standards (IPMS2 Residential). © nchecom 2023.
Produced for TK (Hampstead) Ltd. REF: 1001088